

POMPE A GIRANTE ELASTICA CON SUPPORTO ATTACCO 3/4" GAS

Tipo pompa : FPM 335T - Codice per ordine : 0504

T = Con tenuta meccanica acc.inox AISI 316 / Mechanical Seal

***Service KIT : 5323**



POMPE A GIRANTE ELASTICA CON SUPPORTO ATTACCO 3/4" GAS

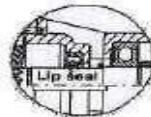
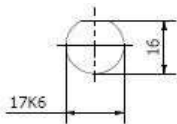
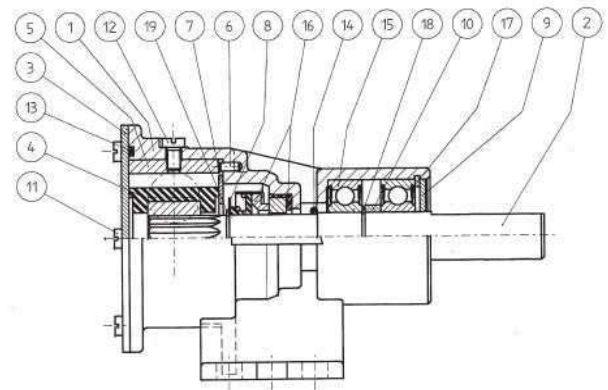
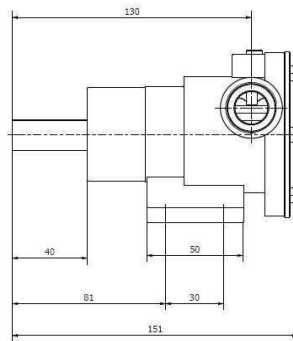
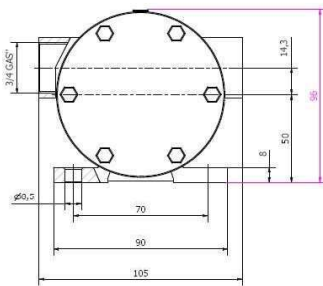
Tipo pompa : FPM 335 L - Codice per ordine : 0514

L = Con Anello di Tenuta con molla inox / Lip Seal

***Service kit : 5322**

Corpo in bronzo alluminio marino

	700 rpm	900 rpm	1400 rpm	1750 rpm	2000 rpm
Bar	l/min	l/min	l/min	l/min	l/min
0,3	16	21	33	41	46
0,6	15	20	32	39,5	45
1	14	19	30	37	42
1,5	13	17	27	33,5	38
2,0	/	/	22	28,5	33



**ANELLO DI TENUTA
Tipo 335 L**

**SEZIONE ALBERO
Tipo 335L/T**

pz	q.	Descrizione	Description	Cod
18	1	Seeger	Retaining ring	1616
17	1	Seeger	Retaining ring	1630
*16	1	Tenuta mecc.	Mechanical seal	1135
15	2	Cuscinetto	Ball bearing	2065
14	1	o-ring	o ring	5204
*13	1	Guarnizione	Gasket	5187
*12	1	vite	screw	2371
*11	6	vite	screw	1441
10	1	spessore	spacer	3796
9	1	rondella	washer	3355
8	1	rondella	washer	3446
*7	1	rasamento	shim	1801
6	1	spina	pin	1522
*5	1	Camma	cam	1818
*4	1	Girante	impeller	1393
*3	1	coperchio	cover	1837
2	1	Albero	shaft	3791
1	1	corpo pompa	body	3788

Tipo pompa FAGK FPM 335T- 3/4 " gas
Codice per ordine : 0504
Johnson : F5B-8 10-24571-01

pz	q.	Descrizione	Description	Cod
18	1	Seeger	Retaining ring	1616
17	1	Seeger	Retaining ring	1630
*16	1	Anello tenuta.	lipseal	5165
15	2	Cuscinetto	Ball bearing	2065
14	1	o-ring	o ring	5204
*13	1	Guarnizione	Gasket	5187
*12	1	vite	screw	2371
11	6	vite	screw	1441
10	1	spessore	spacer	3796
9	1	rondella	washer	3355
8				
*7	1	rasamento	shim	1801
6	1	spina	pin	1522
*5	1	Camma	cam	1818
*4	1	Girante	impeller	1393
*3	1	coperchio	cover	1837
2	1	Albero	shaft	3791
1	1	corpo pompa	body	3788

Tipo pompa FAGK FPM 335L - 3/4 " gas
Codice per ordine : 0514
Johnson : F5B-8 10-24571-13

**POMPA Tipo CON "ANELLO DI TENUTA"****POMPA Tipo FPM 335L - CODICE : 0514**

JOHNSON : F5B-8-10-24571-13
JOHNSON : F5B-8-10-24571-14
JOHNSON : F5B-8-10-24571-15
JOHNSON : F5B-8-10-24571-52
JOHNSON : F5B-8-10-24073-1 / JABSCO : 52040-2001
JOHNSON : F5B-802-10-24073-2 / JABSCO : 21820-2051
JABSCO : 21080-204

JABSCO : ex 4900-200 / 21820-2001

POMPA ALBERO Ø 16 CON CHIAVETTA**POMPA FAGK : FPM 335 LC - CODICE : 0495**

JOHNSON : F8B-8-10-24073-10
JOHNSON : F8B-8-10-24571-13-24-52-54

APPLICAZIONI :

ARONA : AD 495

BARNES BRINCRAFT : 2.5

BETA Marine : XLD 418

BRITISH LEYLAND : 1,5 - 1,8 - 2,5

BURILLOI : XLD 418

CLAE AUSTRALIA : FFD 36 - DB 85 - C 635

C . POWER : 4.18 (1.8 Litri) - 4.90 (1.9 Litri)

C.T. Marine : 1.8 - 2.5 FSE - CT 40D 1,5 Litri

C.T. Marime : C T 50 D -

DAF : 575 - 615

DIECON : ED 33

DOLPHIN Marine : ALTAIR - ALTAIR II - ESCORD 1.6

DUCATI : 21S - 593S

FISCHER PANDA : PMS 15KUB / 20 / 25 / 30 / 33 / 37 / 40

: PMS 45 KUB, Kubota

: PMS 40MB / 50 / 55-Mercedes

: PMS10/4 - PMS 14 /4 -

: PMS HD 15/4 - PMS HD18/4

F.N.M DIESEL : FNM 1.3 ATI

MOTONNAU. BONI : FSD 425- Motore FORD

FORD : FSD 425

FOFNAUT Francia : MERLIN FSD 425

ERALD Marine : 4.120 T - 4.80 - 4.90

GENERAL MOTORS : 220M - 330M -

HIGH POWER Marine : 2,5 Leyland 2.5 -

LANCING Marine : FORD 4 Cil. - 6.354 - 590E - 592E

: T 6.354

LEYLAND THORCROFT : 90-90E-90/2-108/2-RF6.330

MARINE POWER : GM 4 Cil. - GM 350 - GM 454 -

MASE Gruppi : IS 11 - IS 15 IS 31 -

MASE Gruppi : MARINER 1200 - MARINER 3400

MEAKES -J.G : JG 1500 D - JGM 1800 (1.8 litri)

MERCEDES BENZ : OM 401 - OM 402

: OM 602 -3 / OM 638

MERMAID Marine : Meermin - Minuet - Merlin FSD

MOTONNAU.BONI : BF 425 - BF 425 AN - BF 425 TS -

NORFOLK Marine : XLD

NORPRO USA : 600 - 1000 - 1120A - 1731 -1800

PEGASO : 9716S

PEGEOT INDENOR : X6M-88A -

P.K.F. Marine : Ford BSD 444T - FSD 425

RUSSEL NEWBURY : 418 L 89 - RD1 - D2 - D3 - D4

: F.V.L -

SAMOFA : E 108W - 6DR - 6QD -

STAMEGNA Gruppi : SM 300

TEMPEST : Capitan 1.5 - Capitan 1.8

THORCROFT : FEB 90 - 90E - 90/2 - 108

VOLVO PENTA : MB 36B (10550-01)

VOLVO PENTA : MD 22SX - TMD 22SX (29541001)

WIZEMANN - VM : WM 80 - OM 314 -

POMPA CON "TENUTA MECCANICA"**POMPA Tipo FPM 335T- CODICE : 0504**

JOHNSON : F5B-8-10-24571-01
JOHNSON : F5B-8-10-24571-02
JOHNSON : F5B-8-10-24571-03
JOHNSON : F5B-8-10-24571-51
JABSCO : 52040-2001
Jbsco : 21080-204

POMPA ALBERO Ø 16 -CON CHIAVETTA**POMPA FAGK : FPM 335 TC- CODICE : 0494**

DAF : D 475

MERCEDES BENZ-UK : OM314 - OM401 - OM402 -

: OM 601 - OM638 -

MOTONAUTICA BONI : BF 425 AN - BF 425 TS

V W : 4 Cil.

ZENITH / ISUZU : 4JG2 Gen-set

DICON : FD 35

HYUNDAI : Serie M40

JMP : HME 25